

ReliChrom™ OD400/SS

Lot. E905P137

Column dimensions:

Internal Diameter i.d.	0.8 cm
Length	10 cm
Area	0.5 cm²
Resin volume	5 ml
Theoretical plates N	1430 m⁻¹
Asymmetry A_s	0.96

Experimental conditions

Sample	100 µl 1% Acetone (v/v)
Mobile phase	50 mM TRIS/HCl, 0.9% NaCl, pH 8.0
Flow velocity	1.25 ml/min

Instructions for use

Preliminary set up:

- Rinse the chromatographic system circuit with DI water;
- After the removal of the upper stopper of the ReliChrom™ column, connect it to the chromatographic unit;
- Remove the bottom stopper of ReliChrom™ column and connect the column outlet to the specific device of your chromatographic system (Detectors, fraction collector...).

Operation mode:

- wash out the conditioning solution with 10 BV of DI water;
- start the equilibration with the desired buffer solution at an appropriate linear flow rate;
- run the chromatographic separation according to your individual protocol at the same flow rate as in the previous step;
- if necessary, perform a regeneration step following the instructions here below:

- Wash the resin with 2 BV of DI water
- Clean the resin with 1 BV of NaOH 0.5 M in DI water or in 10-40% alcohol solution
- Displace NaOH solution with 2 BV of DI water
- Rinse with 5 BV of DI water

BSA capacity vs linear velocity

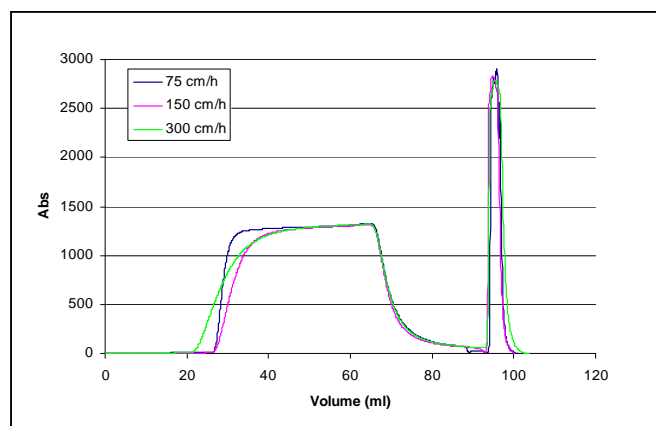
Feed solution: 10 g/l BSA in 20 mM phosphate buffer pH 7 + (NH₄)₂SO₄ 2M

Buffer equilibration: 6 BV of 20 mM phosphate buffer pH 7 + (NH₄)₂SO₄ 2M

BSA loading: 10 BV

Displacement: 6 BV of 20 mM phosphate buffer pH 7 + (NH₄)₂SO₄ 2M

Elution: 4 BV of 20 mM phosphate buffer pH 7



Notice:

All data and suggestions made herein are based upon our research and are believed to be accurate. However, no guarantee is made or implied since conditions and methods of use of our products are beyond our control. Our products are sold on the conditions that the user will evaluate them himself, as well as our formulae and recommendations, to determine their suitability for his own purpose. Also, statements as to the use of our products are not to be construed as recommendations for their use in the infringements of any patent.