

# S 3245 UV/VIS DETECTOR

The **Sykam S 3245 UV/Vis Detector** is a variable wavelength UV/Vis detector for routine analysis and sophisticated research. The dual lamp design offers a wavelength range of 190 – 800 nm with a low baseline noise. The front-accessible flowcell can easily be exchanged, as can be the lamps which are accessible through a side panel in the instrument housing.



## ■ Integrated Wavelength Program

The **S 3245 UV/Vis Detector** features a wavelength program to change the selected wavelength over time. With this feature the optimum wavelength can be selected for each analyzed substance according to its retention time.

## ■ Integrated Peak Detector

The integrated Peak Detector works as a basic fraction collector. The peak detection level can be freely programmed for peak start and peak end to enhance the collection purity. An integrated 24V output for switching a solenoid valve is used for the fraction collection, which is automatically operated with a selectable time delay.

## ■ Optional – Dual-Wavelength

The **S 3245 UV/Vis Detector** is available with an optional second wavelength. This feature enhances the Wavelength Program feature that you can measure 2 different wavelengths at the same time. A second D/A converter output comes with this option to keep the system flexible to be used with any data acquisition software available.

## ■ Optional – Online-Scan

Another option for the **S 3245 UV/Vis Detector** is the Online Scan. With the Online Scan whole spectrum information can be gathered at a certain time. This scan information is stored internally and can be accessed at any time. The Online Scan is a good alternative to a full UV PDA detector.

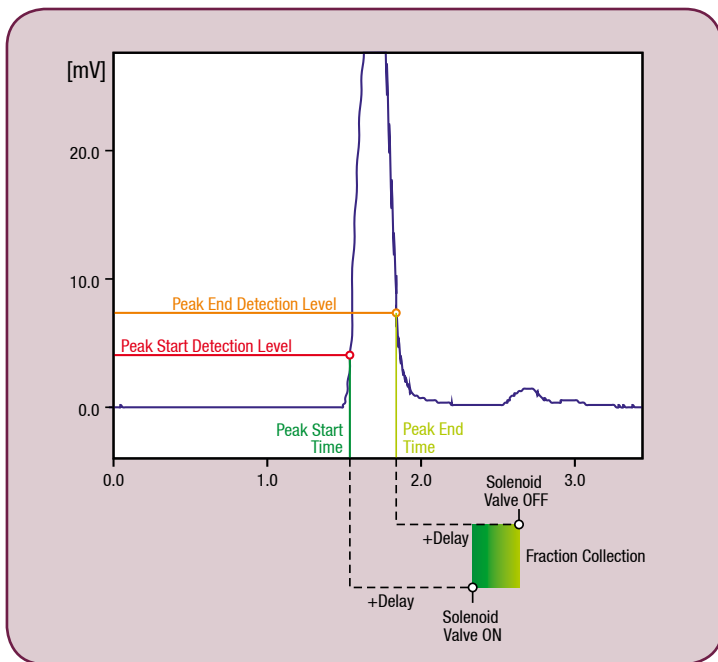


Figure: S 3245 Peak Detector

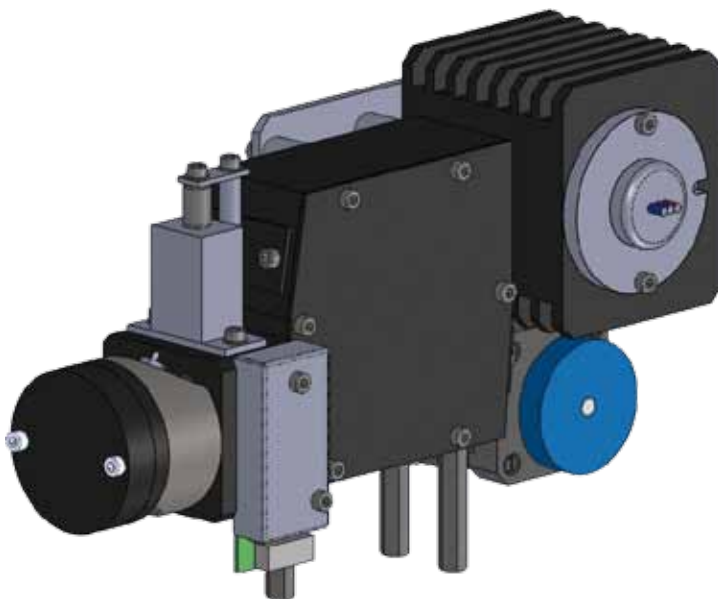


Figure: S 3245 Optical Module

## ■ Technical Specifications

<b>Wetted Materials:</b>	Stainless Steel / PEEK*
<b>Baseline Noise:</b>	$\pm 1 \times 10^{-5}$ AU (@240 nm, 2 sec. Risetime)
<b>Baseline Drift:</b>	$< 3 \times 10^{-4}$ AU/h
<b>Wavelength Range:</b>	190 – 800 nm
<b>Wavelength Accuracy:</b>	$\pm 2$ nm
<b>Linearity:</b>	$> 2.0$ AU
<b>Light Source</b>	Deuterium Lamp, Tungsten Lamp
<b>Wavelength Program:</b>	Programmable, 10 steps
<b>Analog Output:</b>	1x 1 V (optional: 2x 1V)
<b>Control Features:</b>	Internal Peak Detector with +24 V solenoid switching output.
<b>Dimensions: (W x H x D)</b>	310 x 165 x 478 mm
<b>Power Supply:</b>	100 - 250 ~V (47 - 63 Hz)

\* depending on configuration

## ■ Order Information

Catalog No	Description
10 31 011	S 3245 UV/Vis Variable Wavelength Detector
10 31 012	option: Dual Wavelength
10 31 015	option: Online Scan
10 32 001	S 3245 Flowcell, analytical, Stainless Steel
10 32 010	S 3245 Flowcell, analytical, PEEK
10 32 011	S 3245 Flowcell, micro, Stainless Steel
10 32 012	S 3245 Flowcell, micro, PEEK
10 32 013	S 3245 Flowcell, preparative, Stainless Steel
10 32 014	S 3245 Flowcell, preparative, PEEK
40 01 002	Spare Deuterium Lamp
40 01 001	Spare Longlife Tungsten Lamp

**Sykam GmbH**

Systeme & Komponenten analytischer Meßtechnik

Gewerbering 15  
86922 Eresing  
Germany

Tel.: ++49 (8193) 93 82 - 0  
FAX: ++49 (8193) 93 82 - 20  
EMail: Info@sykam.com  
Web: http://www.sykam.com